

# Barometer Rules to Get You Started

You may wonder, when will you be safe from storms?

Safe conditions are:

- If the pressure remains above 1009 mb, there can be no storms.
- If the pressure remains above 1005 mb, there can be no severe thunderstorms, including Supercell Thunderstorms or Tornadoes.
- If the pressure remains above 1000 mb, there can be no cyclones, hurricanes or typhoons.
- If the pressure falls less than 3 mb in the last 3 hours, there can be no storms.

When the pressure starts falling at more than 1.0 mb / hour  
a storm may be approaching.

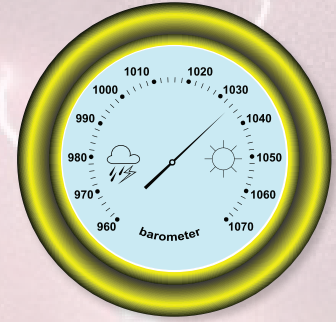
Apply **The Thunderstorm Rule** to be certain:

(i.e. when barometric pressure falls 4 mb or more in the last 3 hours to below 1009 mb, an ordinary thunderstorm is approaching).

If there is no storm onset it means a **Severe Thunderstorm** is developing.

You can have *at least 5 hours early warning* of a deadly tornado from its rigid straight-line signature on a barograph.

You can have *24 hours early warning* of a Hurricane in the tropics when the pressure has been almost steady for 6 hours.



Try these barometer rules now to get started.

Use your own barometer or access a graph of pressure against time (barograph) in an app with pressure sensor. Marine Barograph app can be used on land or at sea.

Barometer readings need to be taken regularly, usually every 6 hours but even more frequently at sea or especially when the pressure starts falling at more than 1.0 mb / hour.

When the barometer is steady the current weather you are observing will persist.

[www.worldstormcentral.co](http://www.worldstormcentral.co)